

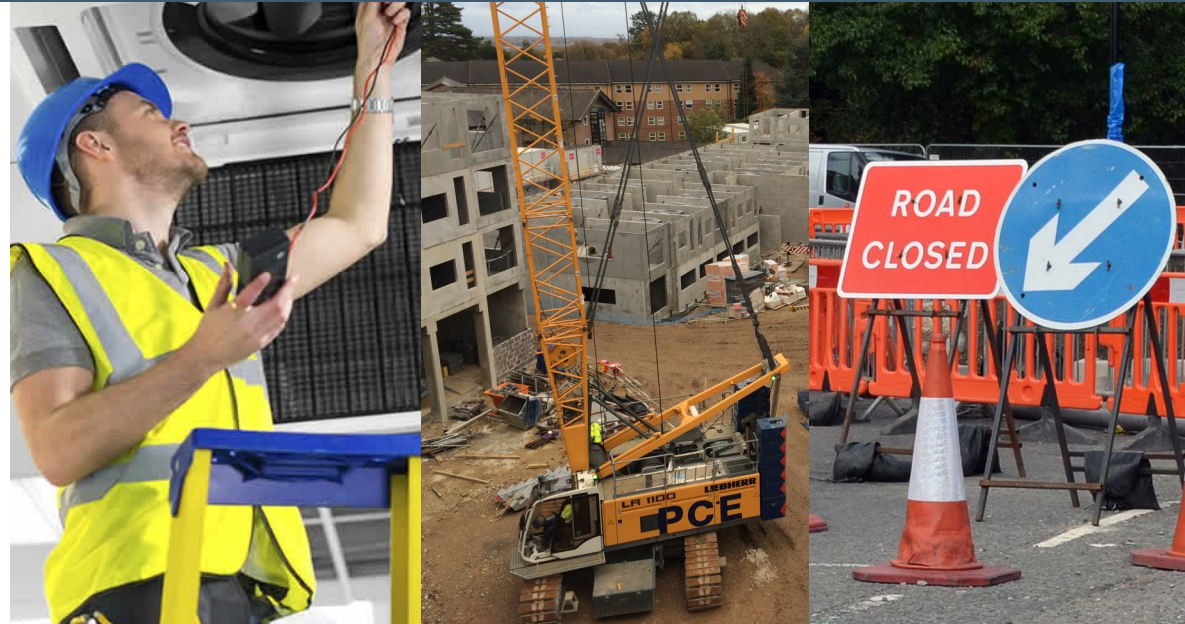
Building works on your campus

How to notify us of safety concerns

Building works include essential maintenance, building improvements and major construction projects.

We employ construction industry professionals and work with them to ensure the campus remains a safe place during these works.

We monitor safety closely, but sometimes incidents or hazards do occur. When they do it is important that the right people are informed so action can be taken.



If you see something you think is unsafe...

If you see something at or near a construction or maintenance site that you think is unsafe, please notify Estates and Facilities Helpdesk so that action can be taken.

Email: efhelp@soton.ac.uk

Phone: 02380 597474 (ext: 27474)

If you are involved in or witness an incident...

The Health and Safety Office has an online reporting system for:

- Injuries
- Near-misses
- Environmental incidents
- Fire incidents

Online form: www.southampton.ac.uk/healthandsafety/accident-reporting

Email: hs@soton.ac.uk

Phone: 02380 593277 (ext: 23277)